



Blowflex Easy

Blowflex Easy is an in-line ionising air nozzle for neutralising and cleaning various surfaces. The nozzle is connected to a 24V DC power supply and incorporates all high voltage parts.

It is highly efficient due to a special patented high frequency high voltage generation.

A green LED shows when the nozzles is in operation.

A quick disconnect 8mm hose connection is standard. If desired an 1/4" BSP air nipple can also be used instead of the quick connect nipple.

Mounting positions can be adapted to the situation, using the Simco-Ion universal mounting brackets, M8 threaded holes in the bottom, or 6 mm holes in the side. When using the holes in the side, an extra cover plate is provided to complete the housing.

The housing is completely IP66 making is suitable for environments where frequent cleaning is conducted.

A wide range of output configurations are available to enable efficient ionised air distribution for many applications.



Simco-Ion Netherlands

Postbus 71
Lochem, The Netherlands NL-7240 AB

Tel: +31 (0)573 288333

Fax: +31 (0)573 257319

general@simco-ion.nl

www.simco-ion.nl

Technical specifications

Supply

Supply voltage	24V DC nominal
Current	Max. 0,3 A DC
Connection	M12, femaile, 5 pole

Input

Compressed air	1 - 7 bar (15 - 100 PSI) Clean oil and dirtfree air.
Connection	G1/4" inside thread with 8 mm hose connection

Output

Connection	G (= BSPP) 1/4" inside thread
------------	-------------------------------

Environment

Use	Industrial, inside
Protection class	IP66
Temperature	0 - 55 °C
Ion balance	+/- 30V with metal nozzle

Status indication

- LED green	Off - No supply voltage On - Operation
-------------	---

Mechanical

Dimensions excluding connectors	Blowflex	With mounting wide
	98 mm	98 mm
	27,3 mm	50 mm
	53,2 mm	56,2 mm

Weight	180 g
--------	-------

Housing	PC-ABS / PUR
---------	--------------

Universal mounting bracket	PA66/6
----------------------------	--------

Optional air output configurations:

- + **Basic**
Input: 8 mm quick disconnect hose connection
Output: ¼" BSP



- + **In-Line**
Input: 8 mm quick disconnect hose connection
Output: 8 mm quick disconnect hose connection
A maximum of 500 mm 8 mm hose can be connected to guide ionized air to a spot where it is needed. The end of the hose can be finished by a nozzle.



- + **Inside**
Input: 8 mm quick disconnect hose connection
Output: Straight or bended ¼" stainless steel tube, custom length up to 900 mm.
This configuration is typically used to clean the inside of object s.a. bottles.



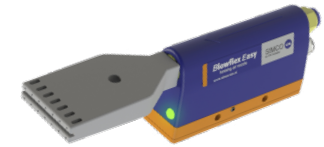
- + **Round (plastic)**
Input: 8 mm quick disconnect hose connection
Output: A round nozzle with a cone shaped blow pattern.
Used for direct surface cleaning or neutralising small objects.



- + **Round (stainless steel)**
Input: 8 mm quick disconnect hose connection
Output: A round nozzle with a cone shaped blow pattern.
Used for direct surface cleaning or neutralising small objects in harsh environments.



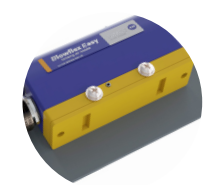
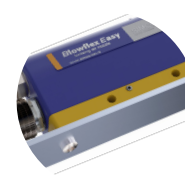
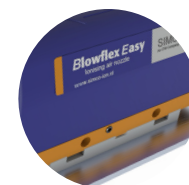
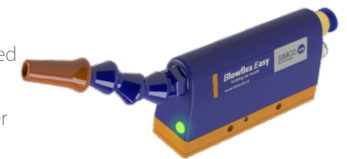
- + **Flat**
Input: 8 mm quick disconnect hose connection
Output: A flat nozzle with a flat shaped blow pattern.
Typically for applications of neutralising and cleaning flat surfaces of sheet separation.



- + **Spot**
Input: 8 mm quick disconnect hose connection
Output: A round nozzle with a spot shaped blow pattern
Special for strong blow-off force on a small spot.



- + **Flex-line**
Input: 8 mm quick disconnect hose connection
Output: Flex line up to 500 mm
Flex-line can be used to distribute ionised air to odd-shaped products.
Flex-line is not provided by Simco. Order the Basic configuration.



Universal bracket small

Universal bracket wide

Bottom mounting

Side mounting